

THIS EOI WILL SEE THE COLLABORATION BETWEEN ONE OF SINGAPORE'S MOST ESTABLISHED ARCHITECTURAL FIRMS, 'RSP ARCHITECTS PLANNERS & ENGINEERS (PTE) LTD', AND MELBOURNE'S OWN RISING AWARD-WINNING ARCHITECTURAL AND DESIGN PRACTICE 'HERBERT + MASON'.

RSP IS THE PROUD RECIPIENT OF SINGAPORE'S PREMIER DESIGN PRIZE 'PRESIDENT'S DESIGN AWARD' IN 2008 FOR ITS BOLD AND DYNAMIC EXPRESSION OF AN ART INSTITUTION CAMPUS FOR THE LASALLE COLLEGE OF THE ARTS; HERBERT + MASON IS THE 2008 RECIPIENT OF AUSTRALIA'S FOREMOST INTERIOR DESIGN ACCOLADE, BEING THE 2008 WINNER IN DESIGN INSTITUTE OF AUSTRALIA'S ANNUAL 'INTERIOR DESIGN AWARDS (RETAIL DESIGN)' FOR ITS INNOVATIVE KSUBI'S FLAGSHIP STORE DESIGN.

THIS JOINT-EFFORT VENTURE WILL SEE RSP'S HOLISTIC MULTI-DISCIPLINARY SERVICES BEING COMPLEMENTED BY HERBERT+MASON'S INNOVATIVE INTERIOR SPACE CRAFTING IDEOLOGY AND LOCALISED KNOWLEDGE AND LIASIONS.

RSP started out as a small partnership practice, Raglan Squire & Partners in 1956. It has since grown in scope and scale to become one of the largest and most established practices in Asia.

RSP's strength lies in its total commitment to Excellence in Planning and Design and in the delivery of Quality Buildings and Projects. Our approach is client-orientated and collaborative. The management is innovative, quality driven and highly professional, supported by staff that are highly talented and resourceful. Together, the team builds upon RSP's broad and varied experience to offer clients a fully integrated multi-disciplinary professional service that is in a league of its own.

With associated companies Squire Mech Pte Ltd (mechanical and electrical engineering) and RSP Interior Pte Ltd, the RSP Group has a combined staff strength of more than 800 worldwide, which includes eminent persons in senior management who are captains of the industry.

RSP offers an integrated multi-disciplinary professional services in architecture, city planning, urban design, civil and structural engineering, mechanical and electrical engineering and interior design. It is therefore a single point source for complete and professional building and development consultancy service. Projects scale range from small conservation works and alteration and additions works to shopping malls to large scale projects such as hospital, metro train stations, educational campuses, technology and business park, luxury residential developments as well as city masterplans. RSP also has a string of successful collaborations with various overseas practices, including Toyo Ito and Zaha Hadid (One North masterplan) to name a few.

Currently, the firm is working with OMA's office on a large scale residential project (Gillman Heights), and on another large scale residential development with Zaha Hadid's office (Farrer Court).

TEAM NOMINATION:

Design Director - Pok Siew Fatt (Registered Architect/ Director)
Design Team - Suen Wee Kwok (Design Architect/ Associate)
- Leng Chyi Bin (Design Architect/ Senior Architect)
- Katie Tan (Design Architect/ Architect)
Structure Director - Lai Huen Poh (Registered Structure Engineer/ Managing Director)

HERBERT + MASON is an award-winning architectural and design practice dedicated foremost to the realisation of successful and operational buildings for their clients; they believe that an architect's role should be to guide the collaboration rather than impose solutions.

The practice nurtures client-architect creative processes over its own authorship, allowing the practice to think and operate in areas beyond the boundaries of architecture and urbanism.

Despite being a young practise, they have grown consistently in scale and reputation due to their approach and extensive experience in projects of varying scales and program, from urban design to product design, both locally in Australia and overseas.

The office and staff have received several commendations and awards for their work and studies, winning the 2008 Retail Interior Design Award for the Ksubi flagship store, shortlisted for the Claude Maus Flagship store.

Their work has been published in several local and international publications for both their approach to innovation and approach including SpaceCraft2, Monument, Frame, Belle, Artichoke, Monster Mag, Harpers Bazaar, Vogue and Vogue living and featured in publications from Spain, Korea, Japan and Germany.

TEAM NOMINATION:

Design Director - Matthew Herbert (Principal)
Design Team - Rebecca Wood (Interior Designer/ Project Architect)
- Bertrand Lai Tze-Wei (Design Architect / 3D Visualiser)
- Ian Munro (Senior Technical Architect / Technical Mentor)

APPROACH TO DESIGN MANAGEMENT

The team acts collaboratively and cohesively to ensure deadlines are met and goals are achieved. However, there are clear definitions of roles into two main streams, design and documentation. Whilst working as one team, this split of responsibilities will ensure that the project's design and project delivery are given equal ranking and access from the outset, with the most appropriately skilled personnel being allocated to each.

There will be regular internal design review sessions between RSP and Herbert & Mason to ensure we meet the consultant group and client with design issues considered in advance. In order to maintain continuity, our senior team members attend all project meetings, both internally and externally, to allow good communication and continuity of decision making.

TIME CONTROL

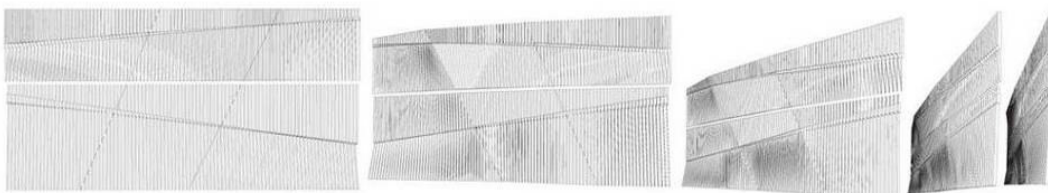
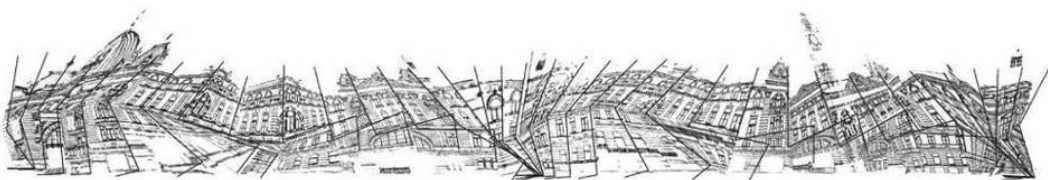
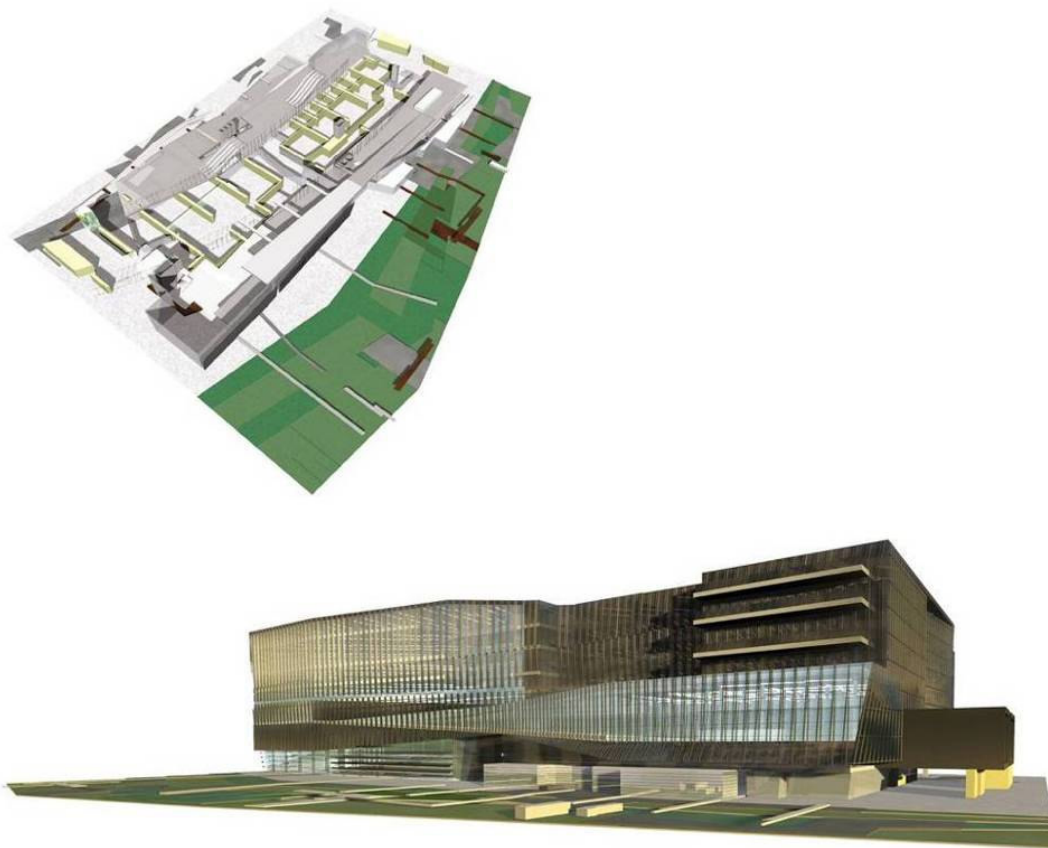
Core to Herbert & Mason's skill is an ability to provide timely delivery of complex projects. RSP and Herbert + Mason will provide a clear and unambiguous chain of command. In order to provide effective time performance the Herbert & Mason with the RSP team will provide leadership and direction to the Consultant team and strong guidance to the client team to achieve sign off at the appropriate milestones. Time performance will also be enhanced due to the careful selection of the project team who all display strong skills in the arena of public place design, retail, institutional and commercial spaces. Additionally, the flexibility of the selected staff allows task weighting unconstrained by staff titles.

Robust office systems that have been adopted on previous projects will be implemented to contribute to clear communication that results in effective time performance. An example of this will be how the integrity and the intent of the original design can be maintained throughout the duration of the project. This management system will monitor the workflow, the design review process and the sign off procedures during the development of the design. We have an FTP site that can enable all parties to share documents in a controlled environment should this be deemed expedient.

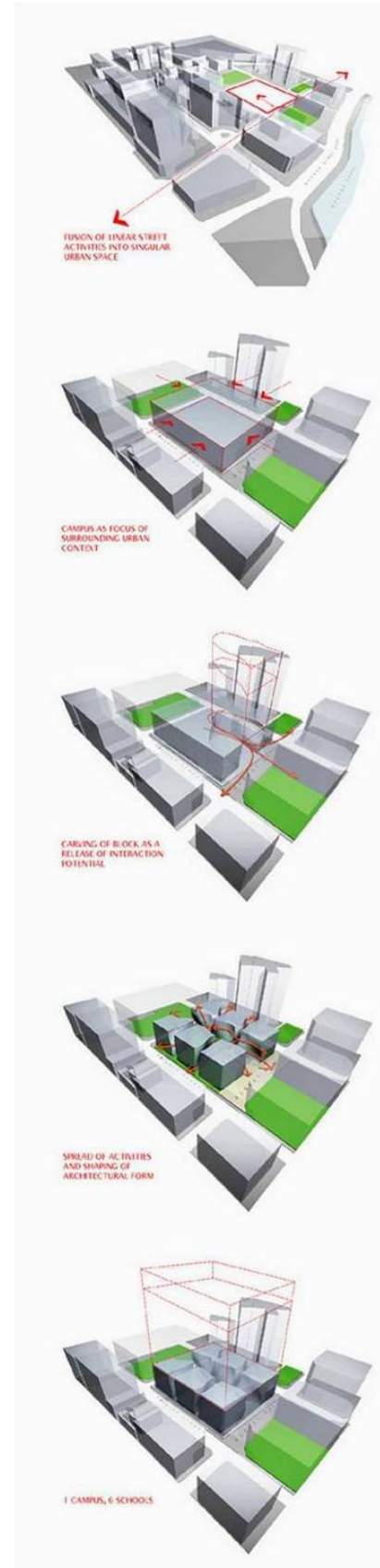
Presence - Porosity - Interaction

RSP's recent award-winning project, LASALLE College of the Arts, best expresses our design philosophy. From conception, there was an intention to reflect and engage the city fabric. The art school, with its various departments and multi-faceted student population, to be placed in the heart of the city, was seen as an opportunity for a porous network for interactions to take place on many different levels. The monolithic external facade, with its city-view apertures, announces the presence of this new kid on the proverbial city block. The internal glass facade, reflecting the porosity of the city street, marks a permeable barrier through which students can showcase their works to an appreciative public. The sheltered courts, major nodes binding the paths, set the stage for intimate performances and closer interaction between student and passerby.

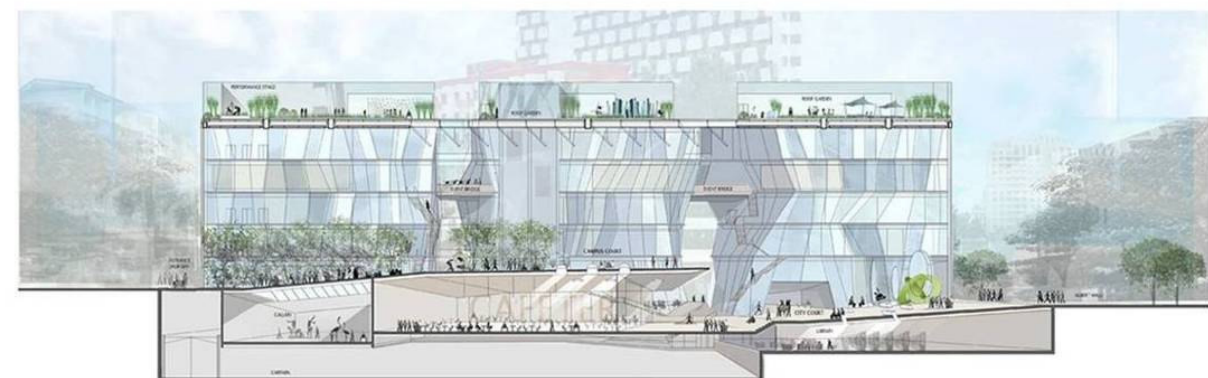
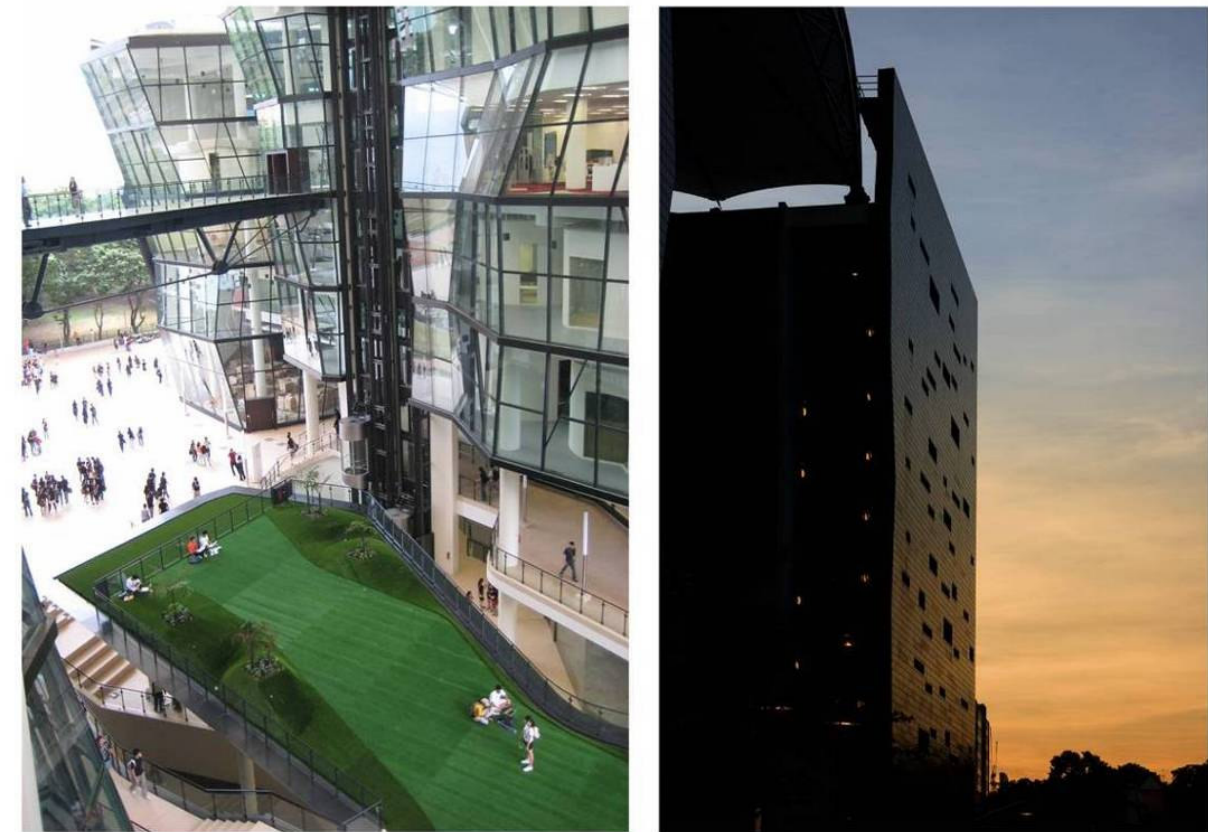
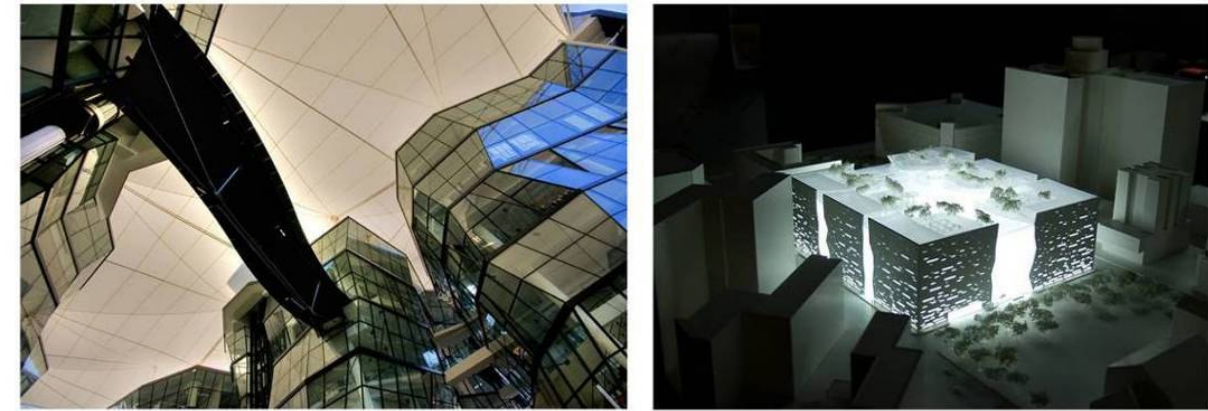
Herbert + Mason is no stranger to public buildings. The New Fish Market at Flinders Street recalls and draws on the urban consequences of the former fish market connecting Flinders Street and Northbank. The external column camouflage establishes its presence on an immediate and urban scale. The porosity of the two plate system emerges in the oscillation between circulation and programmatic zones. The stammering long surface panorama refers to the former building, and the interaction between user and building subtly changes together with the expression of the surface, as one moves within or around.



New Fish Market . Flinders Street



LASALLE College of The Arts . Singapore



Without Boundaries - Flexibility - Integration

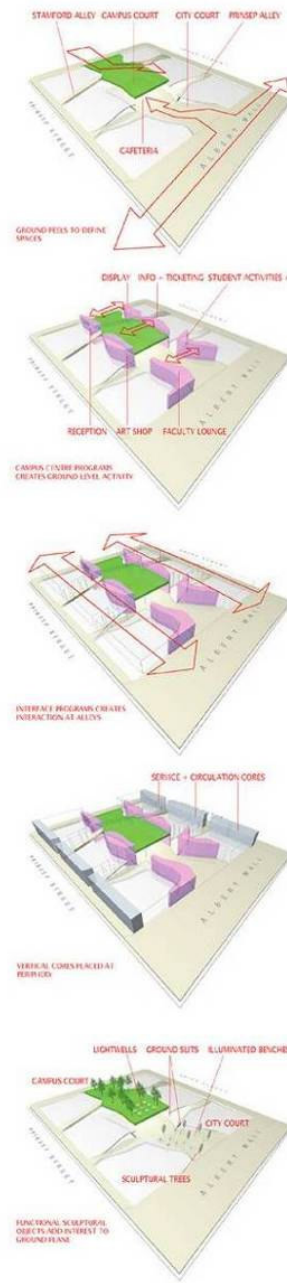
RSP has designed several successful institutional buildings over the years, they include:
Chicago Business School (adaptive reuse of Chinese courtyard house built in 1885)
ITE College East (1st Regional Campus)
Xiamen Institute of Technical Education (integrated educational and lifestyle hub)
LASALLE College of the Arts (Art school in the City)

The architectural approach across the board is to design a user-centric buildings, allowing a variety of uses and providing for a variety of users.

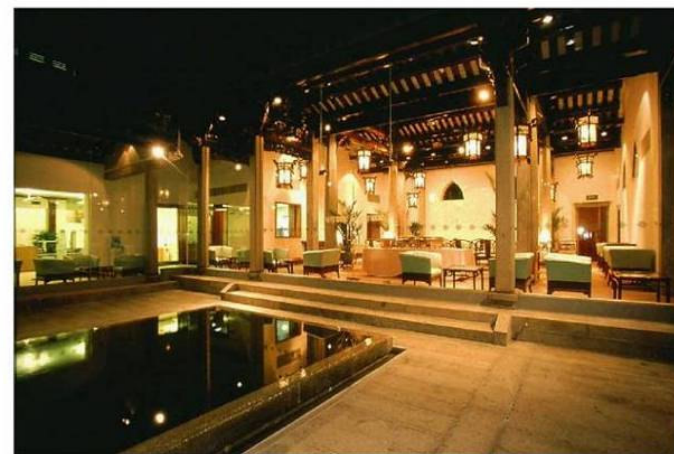
We believe in a learning environment without boundaries. Where possible, such as in LASALLE College of the Arts, boundaries between in and out, private and public, are dissolved, to maximise the potential sources of inspiration for the students in their creative work.

We believe in the flexibility of learning spaces, giving the user more choice, whether it is a small intimate discussion setting, or a specialised technical laboratory where experimental testing can be carried out. Classrooms in ITE College East and Xiamen Institute of Technical Education are designed to be modular, yet allow for the expansion over time.

We believe in the integration of life into learning. Institutional buildings are fused with lifestyle aspects such as sports centres, arts and music facilities, and food centres. Also, there is conscious intent to integrate existing site-specific features into the new development. In Chicago Business School, a traditional Chinese courtyard-style house is sensitively fitted with modern technology, to become a charming addition to the development.



Chicago Graduate School of Business



ITE (Institute of Technical Education) College East . Singapore



LASALLE College of The Arts . Singapore

Collaborate - Community - Transition

Design requires meaningful engagement and with peers. A designer must collaborate, cooperate, and interact on a group level on an overarching idea. To that end, the Design Studio is to be a flexible space that has pods for individual quiet work, and open areas for community discussion.

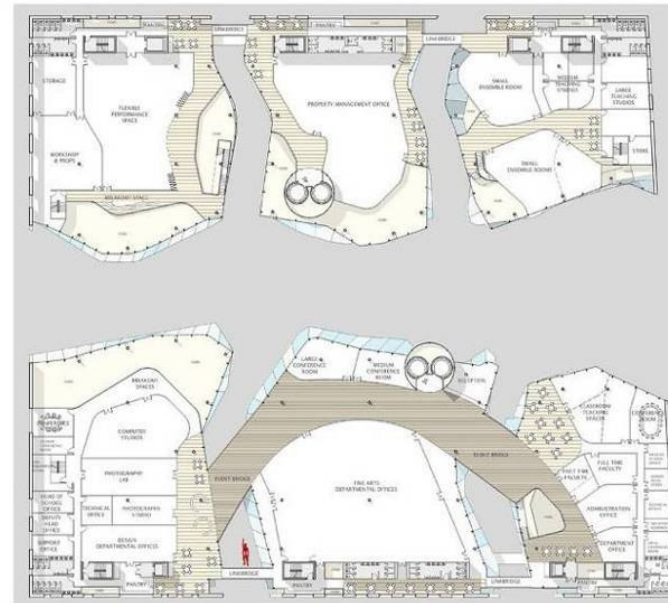
In the VIRTUAL CONCOURSE, learners seek meaningful interactions, and the formation of communities of learners is a necessary initial service. Information technology makes the pursuit of such goals in virtual environments possible, yet at the same time, such virtual environments need to be related to a real environment. It is not an enterprise system. VIRTUAL CONCOURSE brings together the research of individuals and laboratories, who collaborate to seek out unexpected connections within the community, and allow individuals to find ways of combining their efforts to evolve better interactions in well-defined domains of knowledge.

LASALLE College of the Arts allows for student and passerby to collaborate and interact on the Open Court, building a community that includes all who enter the space, whether official or transition.

Transition is the key in *SCAPE Youth Park. Corridors are imbued with functions, such as Music Pods, Graffiti Walls, Digital Forests. These will allow user engagement to take place not only in "official" and allocated rooms, but also in the open, promoting a vibrant design culture.



Virtual Concourse (research in collaboration with RMIT)



LASALLE College of The Arts . Singapore



SCAPE Youth Park . Singapore

GREEN CONSCIOUSNESS

The new building for the Faculty of Architecture, Building and Planning calls for a stringent environmental performance criteria, benchmarked at a possible 6-star Greenstar rating under the Green Building Council of Australia rating system.

In Singapore, we have a performance assessment rating system known as the "BCA Green Mark" launched by our Building Construction Authority (BCA), an equivalent system to the US's LEED and Europe's BREEAM.

With one of our Managing Director sitting on the BCA committee, RSP has been one of the pioneer supporter of this rating system since its inception, and our practice ranks among the top few firms with the most number of Green Mark certified projects to date. In 2008, RSP achieved the top accolade when it Xilinx project received the Platinum rating, the highest rating possible under the scheme.

BCA GREEN MARK

The BCA Green Mark Scheme was launched in January 2005 as an initiative to move Singapore's construction industry towards more environment-friendly buildings.

It is intended to promote sustainability in the built environment and raise environmental awareness among developers, designers and builders when they start project conceptualisation and design, as well as during construction.

BCA Green Mark is a green building rating system to evaluate a building for its environmental impact and performance. It is endorsed and supported by the National Environment Agency. It provides a comprehensive framework for assessing building performance and environmental friendliness. Buildings are awarded the BCA Green Mark based on five key criteria:-

Energy Efficiency

Water Efficiency

Site/Project Development & Management

Good Indoor Environmental Quality & Environmental Protection

Innovation

Under the Green Mark assessment system, points are awarded for incorporating environment-friendly features which are better than normal practice. Apart from achieving the minimum points in each rating scale, the project has to meet all pre-requisite requirements, and score a minimum of 50% of the points in each category, except the Innovation category. The total number of points obtained provides an indication of the environmental friendliness of the building design. The assessment process consists of an initial assessment leading to the award of the Green Mark. Subsequently, buildings are required to have triennial assessment. This is to ensure that the Green Mark building continues to be well-maintained.

Buildings are awarded Certified, Gold, GoldPLUS or Platinum rating depending on the points scored. To date, since the launch of the BCA Green Mark in January 2005, 129 buildings and parks have made the Mark.



XILINX

The 6 storey building provides infrastructural support for all of Xilinx's activities in the region. It encompasses facilities for research and development, product test engineering, logistics and warehousing spread over some 20,000 sqm of built-up area.

Set amongst lush landscaping the building is designed with environmental features like vertical greening on the facades, and the use of energy-efficient glass for climate and shading considerations.

The key feature lies in a series of cascading green terraces which culminates at the 4th Storey in the form of an open courtyard. This space, which is part shaded and part open to sky, forms the heart of the building where social events and corporate functions take place, and provides daylight and greenery into the core of the building.

The architecture is defined by a clean, simple and rational approach. The main facade is defined by alternating bands of glass and aluminium cladding. At the corner, the Atrium is punctuated by alternating meeting rooms and green terraces which provides functional breakout spaces for staff as well as creating an animated expression of the building.

KSUBI FLAGSHIP INTERIOR

Award winning interior design from Herbert + Mason. Eighty per-cent of the shop is constructed from refuse and throw away materials. The entire design is customised and hand crafted to render materials beyond their original means of recognition or expectations.



IMMEDIATE RELEASE 15TH APRIL 2008

'The Bombed Mache,'
Wins 2008 Interior Design Award for KSUBI
Concept & Design by Insh in association with Herbert Mason Architects.

The Bombed Mache interior was designed to reflect the philosophy of Insh's culture.

The new store designed by Insh in association with Herbert + Mason architects seeks to have positive social and environmental standards, and rather than merely meeting expectations, or setting new ones, Insh and Herbert Mason decided to deliberately re-assess expectations, and go off into a new and unexplored dimension.

The concept challenges formal design and architecture. It focuses on colour and 'visual' culture, and its use and reuse when creating the interesting, unpredictable and unique.



Apart from designing with a green mentality in mind, our project also strive to accentuate the living environment in which it is sited. The architecture brings with it an organic form derived from nature, and in the process, engage the user to appreciate the surrounding environment.

HENDERSON "WAVES" DESIGN FORM

Our proposal for a bridge over Henderson Road involves a natural form made of natural materials.

The natural form is achieved by means of simple mathematics: the bridge is a folded three-dimensional surface created with one mathematical equation.

The mathematical equation determines the form of the bridge and inflects it in all three dimensions to the extent that the surface-bridge bends, undulates and ascends by 21 meters in one movement.

In the process it also deforms to provide adequate egress, sloping, shelter, and scenic viewing to the south for pedestrians and cyclists. The proposed bridge is designed to be seen from above and below. The surface-bridge is made of nine waves, divided into six sections. The largest wave (measuring 57 meters long, 6 meters high at its apex) flows across Henderson Road, 30m above the traffic. Pedestrians walking across it from Mount Faber will pass under the deck and appreciate the underside of its waves, as do pedestrian and traffic passing below the bridge.

RSP has a long history since its establishment and its countless projects have been conferred numerous awards. We list below some of the more relevant and major awards we have garnered in recent years.

URA & DESIGN SINGAPORE – PRESIDENT’S DESIGN AWARD (LOCAL):
2008 - LASALLE College of the Arts (Design of the Year)

The President’s Design Award is Singapore’s most prestigious award for its designers and designs. It recognises the significant achievements and contributions of the nation’s design talents. The spirit of the Award encourages design excellence that improves quality of life, enhances human potential and national competitiveness.

The President’s Design Award acknowledges that Singapore’s design industry has reached a key milestone by attaining significant achievements in all disciplines of design, including but not limited to architecture and urban design, exhibition design, interior design and landscape design, product and industrial design, visual communications and fashion design. It is awarded to individuals and designs that are pushing the boundaries of Singapore design, tangibly making a difference to the lives of Singaporeans and larger global communities.

The Award was first launched by The President of the Republic of Singapore in November 2005. Now into its 3rd year, the President’s Design Award 2008 honours RSP Architects, Planners & Engineers (Pte) Ltd as one of its few prestigious recipients for its LASALLE College Of The Arts campus.

BCA GREEN MARK AWARDS (LOCAL):
2007

- Xilinx Asia Pacific Headquarters (Platinum)
- HDB Hub (Gold)
- Orchard Turn Retail Mall (Gold) (in association with Benoy Architects)
- The Orchard Residences (Gold) (in association with Benoy Architects)

2008

- Latitude (Gold)
- Turquoise (Gold)
- 71 Robinson Road (Gold) (in association with Architects 61 Pte Ltd)
- The URA Centre (Gold) (in association with D.Exodus Architects & Planners Pte)

URA ARCHITECTURAL HERITAGE AWARD (LOCAL):

- 2006 - Draycott 8 Condominium (in association with Guida Moseley Brown Architects)
- 2008 - Seaview Condominium

***SCAPE ARCHITECTURAL DESIGN COMPETITION (LOCAL):**

- 2006 - *Scape (1st Place)

FIABCI PRIX D’EXCELLENCE AWARD (INTERNATIONAL):

- 2002 - The University of Chicago Graduate School of Business (Special Recognition)
- 2006 - Hilton Hotel Development, KL Sentral, Malaysia (Best Hotel Project)
(in association with Kanko Kikaku Sekkeisha Yozo Shibata & Associates)

US GREEN BUILDING COUNCIL - LEADERSHIP IN ENERGY & ENVIRONMENTAL DESIGN (LEED) AWARD:

- 2007
- Ecospace, Kolkata (Platinum)
- Olympia Technology Park, Chennai (Gold)
- RMZ Millenia Business Park, Chennai (Gold)
- 2008 - Microsoft Campus Phase 3, Hyderabad (Gold)

*BCA - Building Construction Authority, Singapore
*SIA - Singapore Institute of Architects
*URA - Urban Redevelopment Authority, Singapore
*FIABCI - International Real Estate Federation

"STRICTLY CONFIDENTIAL"

RSP ARCHITECTS PLANNERS & ENGINEERS (PTE) LTD

CLIENT'S FEEDBACK

Dear Valued Client,
Thank you for the opportunity to be a part of your quality development. As a company that continually strives for quality service, we would appreciate your time in responding to this survey form. We value your feedback.

Name of Project: Proposed 6-Storey Institutional Development with 2 Basements for LaSalle-SIA College of the Arts New City Campus at Prinsep Street/ Albert Street
Construction Period: -
Service: Architectural

LOH CHOON TONG
Director, RSP
24 Nov 2008

Note:
1. Please circle your selection
2. For scores of 1, 2 or 3, kindly give us your valuable comments for our note and improvement in these areas
5 = Excellent 4 = Good 3 = Satisfactory 2 = Below Average 1 = Poor

DESIGN PHASE	SCORE	COMMENTS
Meeting Client's Requirements	4	
Innovativeness	4	
Cost Effective Design	4	
Quality of Presentation	4	

PROJECT PHASE	SCORE	COMMENTS
Knowledge of Code Requirements	5	
Planning & Organisation	5	
Project Management Quality Control	5	
Technical Expertise	4	
Contract Administration	4	
Timeliness in Delivery Of Works	4	
Documentation & Record	5	

OVERALL PERFORMANCE:	SCORE	COMMENTS
Professionalism	4	
Quality of Drawings	4	
Responsiveness to Client	4	
Communication Effectiveness	4	
Reliability	4	
Efficiency	4	
Team Spirit	4	
Technical Problem Solving Ability	4	

IV OTHER COMMENTS AND SUGGESTIONS:

PROFESSOR ROBERT ELY
President
LaSalle
Name / Designation / Company Name
Date: 2-1-08

SCORE ATTAINED	5.0
TARGET IMPROVEMENT SCORE FOR THIS PROJECT	3.5
ABOVE/BELOW/AT/NEAR/IN/OUT OF TARGET SCORE BY	1.5

Form Updated: 12 November 2005

Client's Reference: Appraisal from LaSalle's President Prof Robert Ely

HERBERT + MASON

AWARDS :

- 2007 Dulux Colour Awards : Golden Monkey
- 2008 Interior Design Awards (Retail interior) : ksubi

The Interior Design Awards is an annual program developed by the Australian design industry to celebrate, recognise and promote outstanding commercial and residential interior design excellence via a credible, industry-based program, which is backed by the Design Institute of Australia, the professional body representing Australian designers. It is based on peer review and conforms to international standards.

The awards conferred have both national and international significance.

PRINT :

- Monument magazine # 80 : 'Inside trading'
- Monument # 91 : 'Ten names to watch in architecture in design'
- Belle April/May 09 : 'Food & Travel -Creative partnerships'
- Monster Children # 19 : '50 things you should know about Australia in 2008'
- Spacecraft 2 : Fleeting Architecture and Hideouts

WEB :

- Frame magazine : claudes maus
<http://www.framemag.com/?module=news/273&nl=17&l=5>



IMMEDIATE RELEASE 15TH APRIL 2008

'The Bombed Mache,' Wins 2008 Interior Design Award for KSUBI

Concept & Design by ksubi in association with Herbert Mason Architects.

'The Bombed Mache' rejects stereotypical retail interior design and directly reflects the philosophy of ksubi's culture.

The new store designed by ksubi in association with Herbert & Mason architects seeks to have positive social and environmental standards; and rather than merely meeting expectations, or setting new ones, ksubi and Herbert Mason decided to deliberately transcend expectations, and go off into a new and unexpected direction.

The concept challenges formal design and architecture. It focuses on salvage and "mash" culture, with its cut-and-paste ethos creating the interesting, unpredictable and esoteric.

